

**Cor-60 Hidden Sash System
with thermal break**



Cor-60 Hidden Sash System with thermal break

Transmittance

Uw from 1,5 (W/m²K)

Please consult typology, dimensions and glass

Acoustic insulation

Maximum glazing: 28 mm.

Maximum acoustic insulation **Rw=41 dBA**

Finishes

Possibility of dual colour

Colour powder coating (RAL, mottled and rough)

Wood effect powder coating

Anti-bacterial powder coating

Anodized

Categories achieved at test centre

Air permeability
(EN 12207:2000): Class 4

Water tightness
(EN 12208:2000): Class 9A

Wind resistance
(EN 12210:2000): Class C5
Reference test 1,13 x 1,16 m. 1 sash

Possibility of straight or curved sash

Possibility of incorporating hardware with concealed hinges.

Possibility of incorporating security hardware - Evo Security.



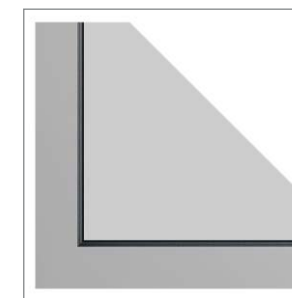
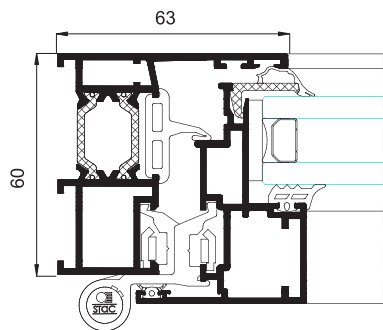
Sections

Frame 60 mm.
Sash 60 mm.

Profile thickness

Window 1,6 mm.

Polyamide strip length 24 mm.



Opening possibilities



Open in:

Practicable 1 & 2 sashes,
Turn-tilt 1 & 2 sashes
Hinged

Maximum dimensions

Width (L) = 1.300 mm.
Height (H) = 2.400 mm.
Balcony single sash, turn-tilt

Please consult regarding maximum weight and dimensions for other opening types

Maximum weight/sash

120 Kg.